



**MORALT**  
the core of the door

# FERRO

## Passiv



5-ply  
faces



Exterior grade  
MDF faces



Flat steel  
stabilizer



PU hard  
foam core



Robust  
construction



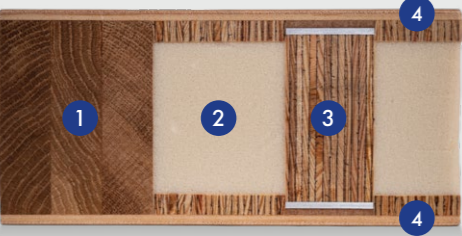
Passivhaus  
compliant



Made in Germany

[www.moralt-ag.de](http://www.moralt-ag.de)

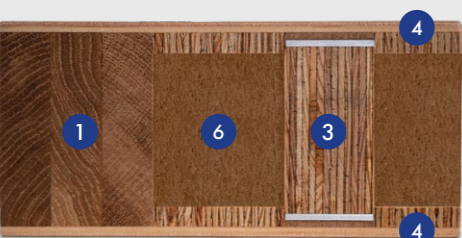
FERRO Passiv



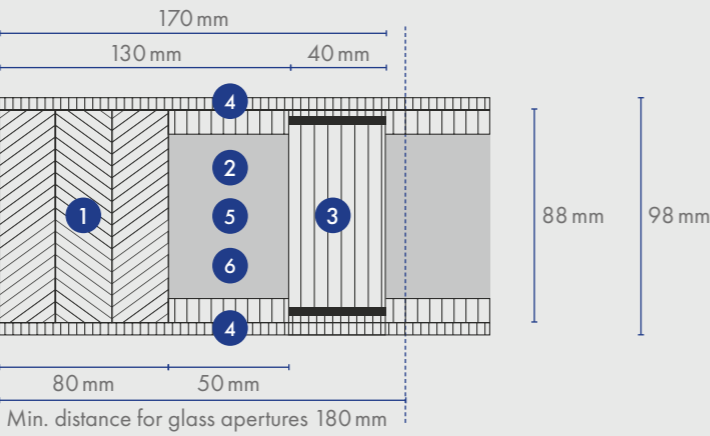
FERRO Passiv Akustik



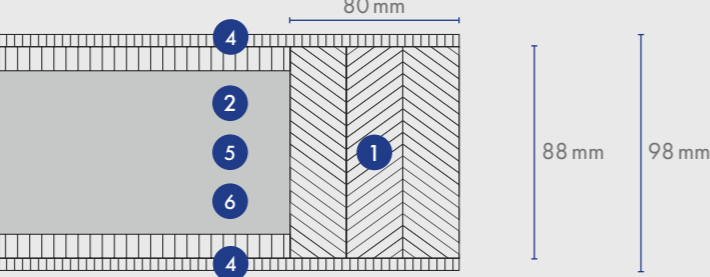
FERRO Passiv Klima



Cross-section lock-side



Cross-section hinge-side



- 1 Framing / stiles & rails

2 Sandwich system with PU hard foam

3 Flat steel stabilizer
- 4 Facing

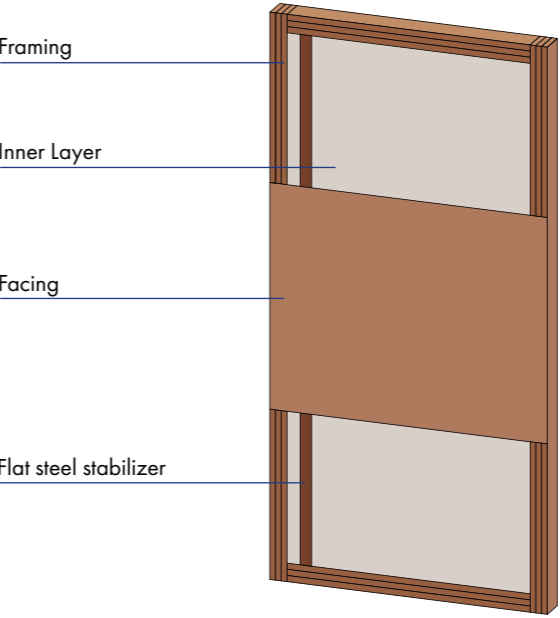
5 Sandwich system with sound insulation insert and PU hard foam

6 Sandwich System with ecological wood fibre insulation

Technical details

FRAME			
① Timber framing	Timber framing finger-jointed and laminated.		
Frieze, trim, glass aperture		Thickness of door blank 98 mm	
		Frame width in mm	Can be trimmed by
	Top	80 (70*)	10**
	Side	80 (70*)	10**
	Bottom	80 (70*)	10**
Minimum distance for glass apertures is 180 mm on all four sides. The frame width corresponds to the shortening dimension. When trimmed by a maximum at the bottom (10 mm), a single rebate (max. 18 mm) or fitting of drop down seal is possible.			
INNER LAYER			
② Construction	<ul style="list-style-type: none"><li>• Sandwich construction of laminated core, HCFC-free and environmentally compatible PU hard foam</li><li>• PassivKlima with ecological wood fiber insulation</li><li>• Surface stability through vertically aligned annual rings</li></ul>		
Bonding	Free of formaldehyde		
③ Flat steel stabilizer	Lock-side flat steel stabilizer – thermally separated and sound insulated – to absorb tractive and shearing forces. Stabilizers are glued and friction-locked with the framework.		
④ FACING			
Bonding	Veneer plywood AW bonding according to DIN 68705-2, 5 layers (noble veneer), 3 layer (cross veneer) = individually veneerable, MDF/HDF exterior = paintable or veneerable, full-surface bonding with the overall construction, min. stress group D4 according to DIN EN 204/205 and DIN EN 14257 (WATT 91)		
EXTERNAL DOOR BLANK			
Model / finish	Trimmed edges and sanded surfaces		
Processing information	With FERRO Passive external door blanks you can manufacture doors systems with a U-value, lower than 0.8 W/m²K). Please contact us and we will provide you with the relevant documents.		

\*for version PassivKlima      \*\* with a max. rebate of 30 mm



Product Range

Thickness in mm	98	
Thickness in mm cross-veneered RV	96	
Length in mm	default	can be cut to
	2,110	2,090
	2,240	2,220
	2,370	2,350
	2,470	2,450
Maximum length of 2,980 mm available on request.		
Width in mm	default	can be cut to
	950	930
	1,050	1,030
	1,150	1,130
	1,230	1,210
	1,250**	1,230

**Face types**  
Veneer plywood: Mahogany SV, Okumé/Gabun SV, Meranti FL, Oak\*, knotty Oak\*, knotty Oak 3.5mm\*, rustic knotty Oak cross-veneered, Pine FL/ SV, Spruce FL/SV, Larch\*, knotty Larch\*, white Fir, paint-grade SV.  
Or: MDF/HDF-exterior\*\*, HPL/CPL laminate

**Framing / stiles & rails**  
Oak, Larch, Conifer wood, Redwood

\*cross-grain also available      \*\*Only MDF-Exterior possible up to a width of 1,250 mm      SV=sliced veneer      FL=Fineline      RV=rotary cut veneer  
Further dimensions, sizes and facings on request.

Certification

	Passiv	Passiv Klima	Passiv Akustik
Height in mm	up to 2,600	up to 2,600	up to 2,600
Width in mm	up to 1,230	up to 1,230	up to 1,230
Thickness in mm	98 (96*)	98 (96*)	98 (96*)
Different climate testing DIN EN 1121 : 2000-09	test climate c, d, e		
Tolerance classes (by using three hinges) DIN EN 12219 : 2000- 6	3		
Thermal transfer coefficient U-value (W/m²K) DIN EN ISO 10077-2 : 2012-06	0.54	0.69	0.78
Acoustic performance DIN EN ISO 717-1 R <sub>wp</sub> (dB)	30	32	38 - 42
Burglar resistance DIN EN 1627 : 2011-09	RC2/RC3**		
Weight 2.240 x 1.050 mm kg/piece	70	80	125

\*cross-veneered      \*\*certified up to height 2,470 mm

CNC-processing service

All types may be delivered CNC processed.



## Any questions?

Info hotline: +49 8026 92538-11

### **Moralt AG**

Obere Tiefenbachstraße 1  
83734 Hausham, Germany

Phone: +49 8026 92538-0  
Telefax: +49 8026 92538-40  
Mail: [sales@moralt-ag.de](mailto:sales@moralt-ag.de)

